




MUSEUM STUDIES PRESENTATION

# Philadelphia Film Society

BY SOFIA MONDRAGON

What is the Philadelphia Film  
Society?

A black silhouette of the state of Pennsylvania is centered on a white background. The silhouette is filled with a solid black color and has a slightly irregular, hand-drawn edge. Overlaid on this silhouette is text in a light pink color. The text is arranged in five lines, following the general shape of the state. The first line starts with a capital 'P' and ends with 'creates'. The second line is 'opportunities for diverse'. The third line is 'communities to experience film'. The fourth line is 'through initiatives that inspire,'. The fifth line is 'educate, challenge and entertain.'.

Philadelphia Film Society creates  
opportunities for diverse  
communities to experience film  
through initiatives that inspire,  
educate, challenge and entertain.

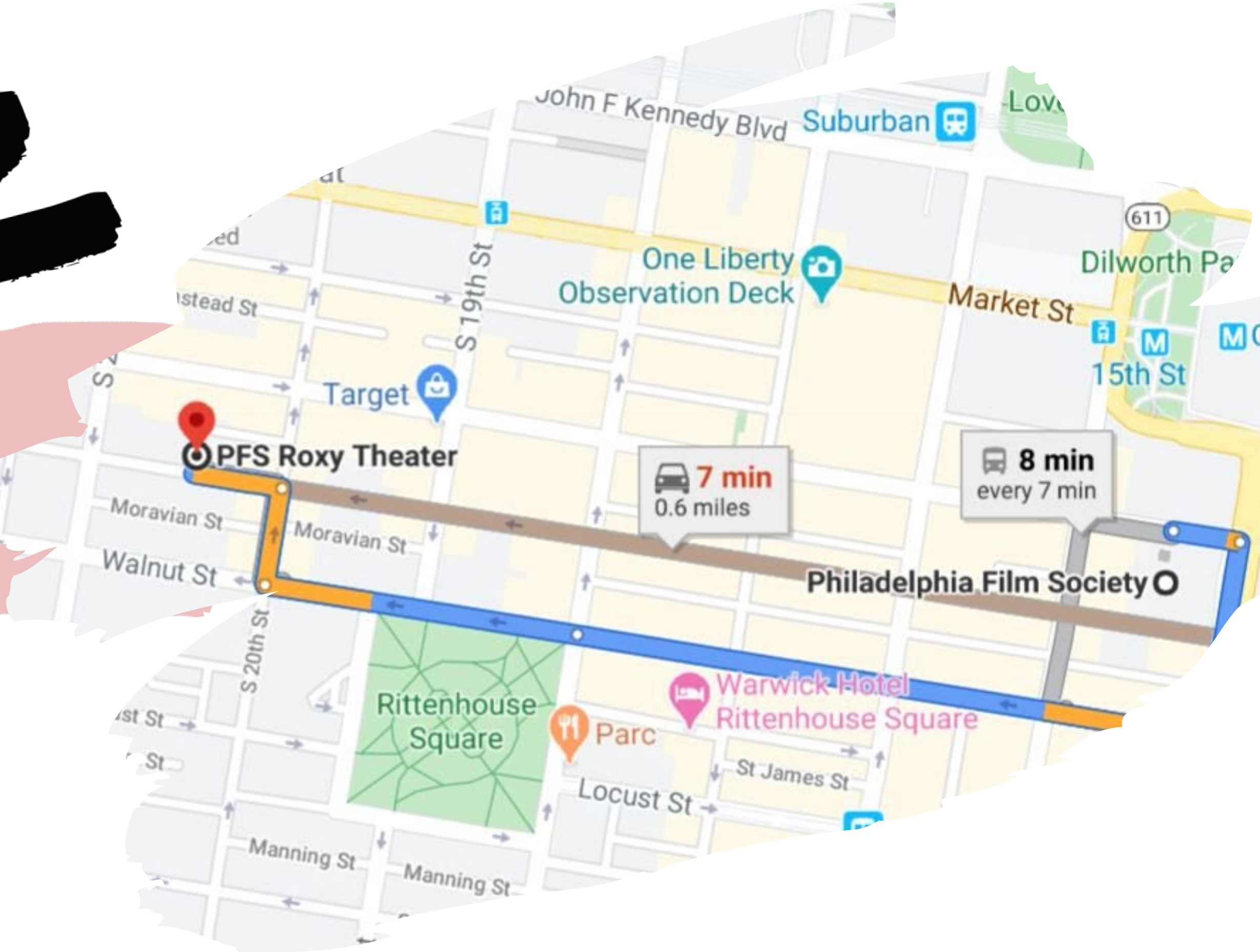


# M

- The PFS is a non-profit art organization and is housed inside the Philadelphia Film Center
- The PFS is made up of 2 movie theaters: The Philadelphia Film Center and the Roxy Theater
- One of the largest programs the PFS has is the Philadelphia Film Festival



# Location





# The History

1921

After many renovations to the original building the Karlton Theater opens



1941-1943

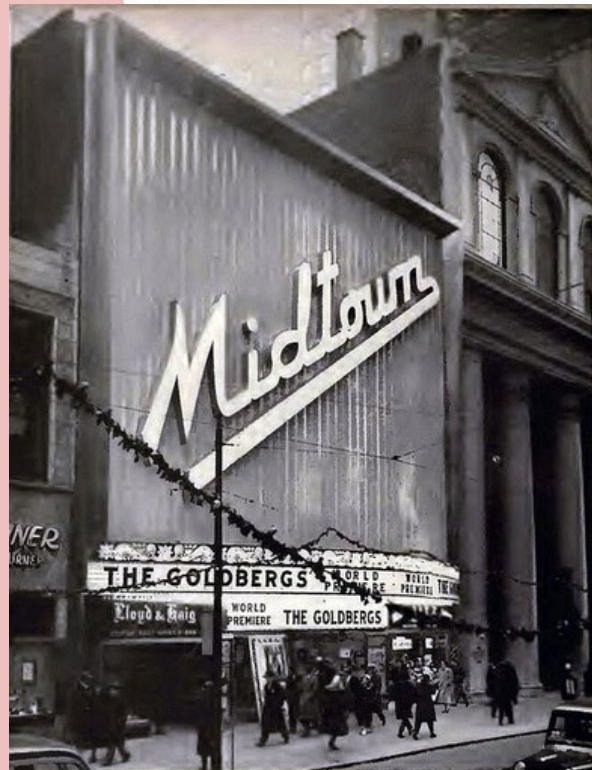
The theater joined the Warner Bros. movie circuit and William Goldman turns the Karlton into the first run movie theater in Philadelphia

1979-1980

The owners sell the Midtown to AMC. AMC splits the Midtown into separate movie theaters.

1950

The Karlton has closed down and is reopened as the Midtown Theater.



1991

The PFS created the Philadelphia Film Festival. It would be in 2009 when the dates shifted to what they are now: the first weeks of April



1995-1999

AMC sold the Midtown to the American Musical Theater Festival (AMTF). The AMTF in 1999 renovated the building and renamed the Midtown as the Prince Musical Theater

2013

The PFS took over the operation of the historic Roxy Theater

2015-2018

The PFS bought the Prince Theater and changed the name to the Philadelphia Film Center





## ROXY THEATER

The PFS acquired this movie theater in 2013



## PHILADELPHIA FILM CENTER

The PFS is currently located in the basement of this movie theater



## MURAL

The mural that lines the lobby of the Philadelphia Film Center

# STAFF



ROSIE JACOBSON

EDUCATION AND COMMUNITY

PROGRAMMING MANAGER



KYRIE FISHER

EXECUTIVE ADMINISTRATOR

& VOLUNTEER MANAGER



BETTINA ESCAURIZA

BIG PICTURE ALLIANCE



# My Role

## GREENFIELD

An educational free field trip program that runs through the end of the school year and includes a film screening, a detailed curriculum packet for each film complete with discussion prompts, pre and post-viewing activities and connections with learning standards.

## CINEMANIACS

A pilot educational program that aims to engage high school students in a diverse selection of films and educate students on the power of film. This program was created with the Big Picture Alliance.

# The Educationa l Projects

## RESPONSIBILITIES FOR GREENFIELD PROJECT:

- Watching 6 movies: The Breadwinner, WALLAY, Supa Modo, Landfill Harmonic, BaddDDD Sonia Sanchez, and Plastic China
- Built lesson plans and curriculum based of the individual movies



## RESPONSIBILITIES FOR CINEMANIACS:

- Creating worksheets
- Taking lesson plans and turning it into a series of Powerpoint presentations
  - Research
  - Creating notebooks
  - Researching
- In-Kind Donations and filling out the documents for these donations
- Help and work in the projectionist booth when the program begins



# Movies on the Block

Movies on the Block is a free, seasonal screening program designed to support Philadelphia neighborhoods with little access to film. The PFS pairs up with other organizations to host these screenings. When my internship ended, I was just about to start working on this project.



Thank

you!

